

# CCNA 1 Pretest Exam Answers 2018 (v5.1 + v6.0) – Full 100%

 [ccnav6.com/ccna-1-pretest-exam-answers-2017-v5-1-v6-0-full-100.html](https://ccnav6.com/ccna-1-pretest-exam-answers-2017-v5-1-v6-0-full-100.html)

CCNA Exam Answers 2017

4.4 (86) votes

**NOTE: If you have the new question on this test, please comment Question and Multiple-Choice list in form below this article. We will update answers for you in the shortest time. Thank you! We truly value your contribution to the website.**

1. **Convert the decimal number 231 into its binary equivalent. Select the correct answer from the list below.**
  - 11110010
  - 11011011
  - 11110110
  - **11100111\***
  - 11100101
  - 11101110
2. **Convert the binary number 10111010 into its hexadecimal equivalent. Select the correct answer from the list below.**
  - 85
  - 90
  - **BA\***
  - A1
  - B3
  - 1C
3. **The failure rate in a certain brand of network interface card has been determined to be 15%. How many cards could be expected to fail in a company that has 80 of the cards installed?**
  - 8
  - 10
  - **12\***
  - 15
4. **A local real estate company can have its 25 computer systems upgraded for \$1000. If the company chooses only to upgrade 10 systems, how much will the upgrade cost if the same rate is used?**
  - \$100
  - \$200
  - **\$400\***
  - \$500
  - \$600
5. **Considering the average capacity of storage device media, drag the storage media on the left to the capacity list on the right.**

Considering the average capacity of storage device media, drag the storage media on the left to the capacity list on the right.

DVD	largest capacity
hard drive	2nd largest capacity
floppy disk	3rd largest capacity
CD	smallest capacity

Considering the average capacity of storage device media, drag the storage media on the left to the capacity list on the right.

	hard drive
	DVD
	CD
	floppy disk

Which two devices provide permanent data storage? (Choose two.)

- ☐ Blu-Ray disc \*
- ☐ hard drive\*
- ☐ keyboard
- ☐ monitor
- ☐ RAM

6. If a technician uses an average of 2 cans of compressed air per week for cleaning, how many cans should be ordered for 8 technicians over the next 10 weeks?

- ☐ 16
- ☐ 20
- ☐ 80
- ☐ 160\*
- ☐ 200

7. What is a function of the BIOS?

- ☐ enables a computer to connect to a network
- ☐ provides temporary data storage for the CPU
- ☐ performs a power-on self test of internal components\*
- ☐ provides graphic capabilities for games and applications

8. Match the form of network communication with its description. (Not all options are used.)

Question and Answer:

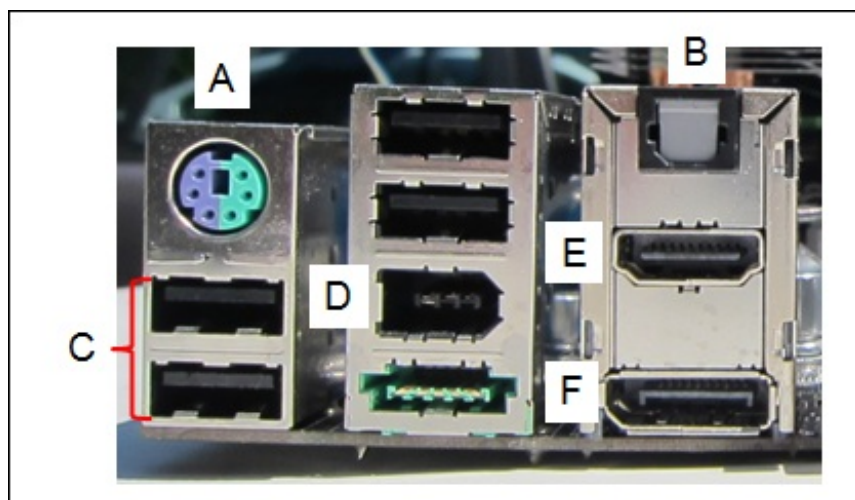
Match the form of network communication with its description. (Not all options are used.)	
instant messaging	interactive websites where people create and share user-generated content with friends and family
social media	web pages that groups of people can edit and view together
weblog (blog)	an audio-based medium that allows people to deliver their recordings to a wide audience
wiki	real-time communication between two or more people
podcast	

Match the form of network communication with its description. (Not all options are used.)	
	social media
	wiki
weblog (blog)	podcast
	instant messaging

9. Refer to the exhibit. Match the port to the associated letter shown in the exhibit. (Not all options are used.)

Question:



Refer to the exhibit. Match the port to the associated letter shown in the exhibit. (Not all options are used.)	
DisplayPort	A
DVI	B
HDMI	C
IEEE 1394	D
PS/2	E
S/PDIF	F
USB	

Answer:

Refer to the exhibit. Match the port to the associated letter shown in the exhibit. (Not all options are used.)

DVI	PS/2
	SPDIF
	USB
	IEEE 1394
	HDMI
	DisplayPort







10. Which is a characteristic of the Internet?

- It is not centrally governed.\*
- It uses only physical addresses.
- It uses private IP addressing.
- It is localized to specific geographic locations.







11. Match the icon to its likely associated use. (Not all options are used.)

Question as presented:

Match the icon to its likely associated use. (Not all options are used.)

	search for a file on disk
	resume work on an open business letter
	access a site on the World Wide Web
	resume reading an open .pdf document
	safely remove a flash drive
	

12. Which command can be used to test connectivity between two computers that are attached to a network?

- ipconfig

- **ping\***
- winipcfg
- ifconfig
- nbtstst -s

13. **A person-hour is the amount of work that the average worker can do in one hour. It is anticipated that a company-wide system upgrade will take approximately 60 person-hours to complete. How long will it take five technicians to perform the refresh?**

- 5 hours
- 8 hours
- 10 hours
- **12 hours\***

14. **Match the application with the correct compressed files format. (Not all options are used.)**

Question:

Match the application with the correct compressed file format. (Not all options are used.)

HTML	<div>compressed video formats</div> <div>Target</div> <div>Target</div> <div>compressed image formats</div> <div>Target</div> <div>Target</div>
QuickTime	
GIF	
JPEG	
MPEG	

Match the application with the correct compressed files format

**Answer:**

compressed video formats
QuickTime
MPEG
compressed image formats
GIF
JPEG

15. **Which type of connector does a network interface card use?**

- DIN
- PS-2
- RJ-11
- **RJ-45\***

16. A user is having problems accessing the Internet. The command ping **www.cisco.com** fails. However, pinging the IP address of **cisco.com** with the command ping **198.133.219.25** is successful. What is the problem?
- The web server is down.
  - The default gateway is incorrect.
  - **There is a problem with DNS.\***
  - The address of the ARP cache is incorrect.
17. Which option shows the proper notation for an IPv6 address?
- 2001,0db8,3c55,0015,abcd,ff13
  - 2001-0db8-3c55-0015-abcd-ff13
  - 2001.0db8.3c55.0015.abcd.ff13
  - **2001:0db8:3c55:0015::abcd:ff13\***
18. What is the purpose of the routing process?
- to encapsulate data that is used to communicate across a network
  - **to select the paths that are used to direct traffic to destination networks\***
  - to convert a URL name into an IP address
  - to provide secure Internet file transfer
  - to forward traffic on the basis of MAC addresses
19. Which device should be used for enabling a host to communicate with another host on a different network?
- switch
  - hub
  - **router\***
  - host
20. A home user is looking for an ISP connection that provides high speed digital transmission over regular phone lines. What ISP connection type should be used?
- **DSL\***
  - dial-up
  - satellite
  - cell modem
  - cable modem
21. A company is expanding its business to other countries. All branch offices must remain connected to corporate headquarters at all times. Which network technology is required to support this requirement?
- LAN
  - MAN
  - **WAN\***
  - WLAN
22. Why would a network administrator use the tracert utility?
- to determine the active TCP connections on a PC
  - to check information about a DNS name in the DNS server
  - **to identify where a packet was lost or delayed on a network \***
  - **to display the IP address, default gateway, and DNS server address for a PC \***
23. Which basic process is used to select the best path for forwarding data?

- **routing\***
- switching
- addressing
- encapsulation

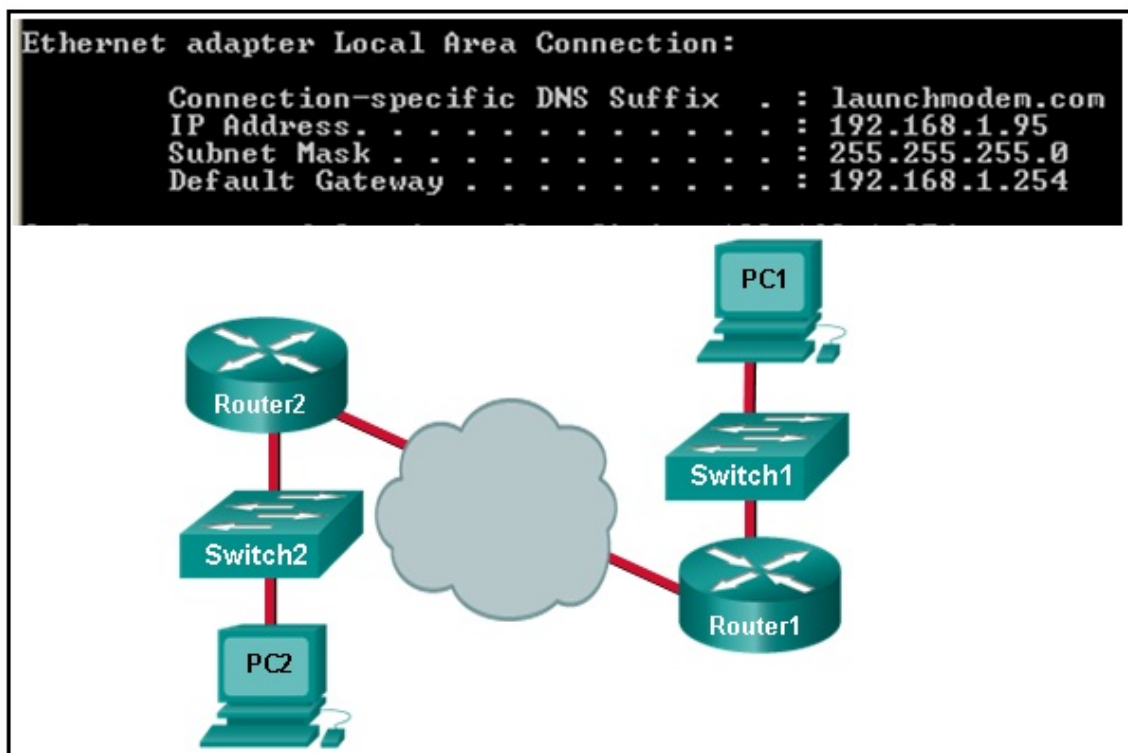
24. Which wireless security procedure should be used to hide the WLAN ID from wireless clients?

- Configure WEP only on the access point.
- Install WAP on the wireless clients.
- Configure MAC address filtering on the access point.
- **Disable the broadcast of the SSID on the access point.\***
- Decrease the antenna spectrum on each wireless client.

25. What is the purpose of having a converged network?

- to provide high speed connectivity to all end devices
- to make sure that all types of data packets will be treated equally
- to achieve fault tolerance and high availability of data network infrastructure devices
- **to reduce the cost of deploying and maintaining the communication infrastructure\***

26. Refer to the exhibit. Consider the IP address configuration shown from PC1. What is a description of the default gateway address?



- It is the IP address of the Router1 interface that connects the company to the Internet.
- **It is the IP address of the Router1 interface that connects the PC1 LAN to Router1.\***
- It is the IP address of Switch1 that connects PC1 to other devices on the same LAN.
- It is the IP address of the ISP network device located in the cloud.

27. Which technology provides a solution to IPv4 address depletion by allowing

**multiple devices to share one public IP address?**

- ARP
- DNS
- **NAT\***
- SMB
- DHCP
- HTTP

**28. Which subnet would include the address 192.168.1.96 as a usable host address?**

- **192.168.1.64/26\***
- 192.168.1.32/27
- 192.168.1.32/28
- 192.168.1.64/29

**29. A technician uses the ping 127.0.0.1 command. What is the technician testing?**

- **the TCP/IP stack on a network host\***
- connectivity between two adjacent Cisco devices
- connectivity between a PC and the default gateway
- connectivity between two PCs on the same network
- physical connectivity of a particular PC and the network

**30. Which function is provided by TCP?**

- data encapsulation
- **detection of missing packets\***
- communication session control
- path determination for data packets

**31. What is the purpose of ICMP messages?**

- to inform routers about network topology changes
- to ensure the delivery of an IP packet
- **to provide feedback of IP packet transmissions\***
- to monitor the process of a domain name to IP address resolution

**32. What statement describes the function of the Address Resolution Protocol?**

- ARP is used to discover the IP address of any host on a different network.
- ARP is used to discover the IP address of any host on the local network.
- ARP is used to discover the MAC address of any host on a different network.
- **ARP is used to discover the MAC address of any host on the local network.\***

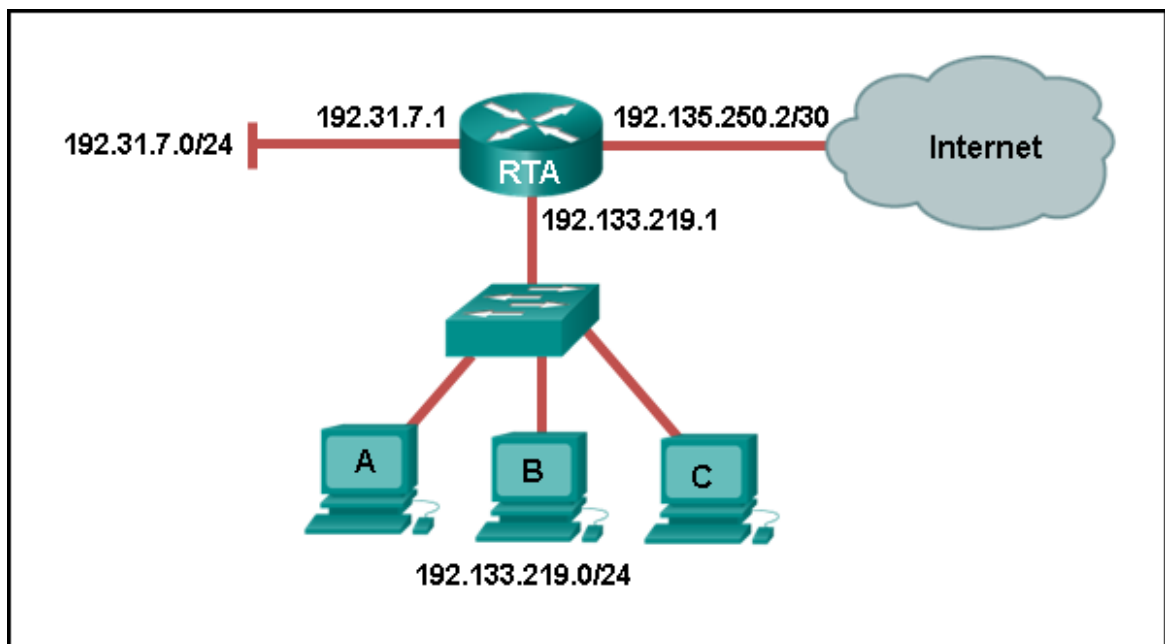
**33. What is the general term that is used to describe a piece of data at any layer of a networking model?**

- frame
- packet
- **protocol data unit\***
- segment

**34. Which three IP addresses are private ? (Choose three.)**

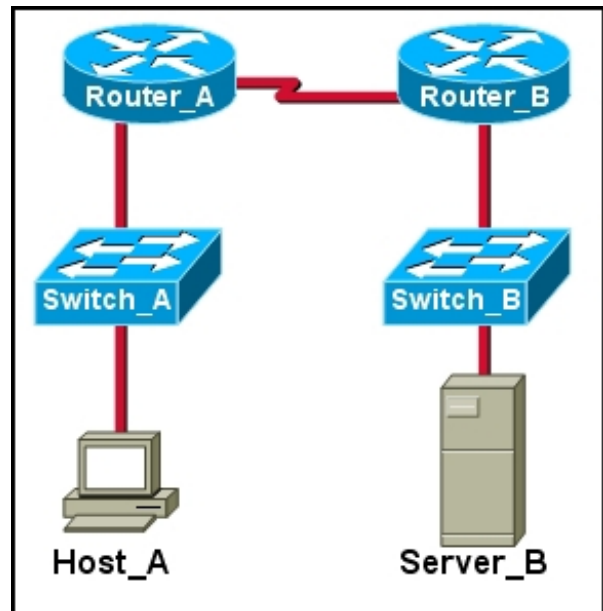
- **10.1.1.1\***
- 172.32.5.2
- 192.167.10.10
- **172.16.4.4 \***

- 192.168.5.5\*
  - 224.6.6.6
35. How does a networked server manage requests from multiple clients for different services?
- The server sends all requests through a default gateway.
  - **Each request is assigned source and destination port numbers.\***
  - The server uses IP addresses to identify different services.
  - Each request is tracked through the physical address of the client.
36. Which protocol translates a website name such as **www.cisco.com** into a network address?
- HTTP
  - FTP
  - DHCP
  - **DNS\***
37. What is an advantage of using IPv6 ?
- **more addresses for networks and hosts\***
  - faster connectivity
  - higher bandwidth
  - more frequencies
38. Refer to the exhibit. Using the network in the exhibit, what would be the default gateway address for host A in the 192.133.219.0 network?



- 192.135.250.1
  - 192.31.7.1
  - 192.133.219.0
  - **192.133.219.1\***
39. Refer to the exhibit. Host\_A is preparing to send data to Server\_B. How will Host\_A address the packets and frames that will carry this data? (Choose two.)

- The packet destination will be addressed with the IP address of the Router\_B interface that is attached to Router\_A.
- The frame destination will be addressed with the MAC address of Switch\_A.
- The packet destination will be addressed with the IP address of the Router\_A LAN interface.
- **The frame destination will be addressed with the MAC address of the Router\_A LAN interface. \***
- **The packet destination will be addressed with the IP address of Server\_B.\***



- The frame destination will be addressed with the MAC address of Server\_B..
40. **A network technician is attempting to configure an interface by entering the following command: SanJose(config)# ip address 192.168.2.1 255.255.255.0. The command is rejected by the device. What is the reason for this?**
- **The command is being entered from the wrong mode of operation.\***
  - The command syntax is wrong.
  - The subnet mask information is incorrect.
  - The interface is shutdown and must be enabled before the switch will accept the IP address.
41. **What protocol is responsible for controlling the size of segments and the rate at which segments are exchanged between a web client and a web server?**
- **TCP\***
  - IP
  - HTTP
  - Ethernet
42. **A network administrator is troubleshooting connectivity issues on a server. Using a tester, the administrator notices that the signals generated by the server NIC are distorted and not usable. In which layer of the OSI model is the error categorized?**
- presentation layer
  - network layer
  - **physical layer\***
  - data link layer
43. **Which statement is true about variable-length subnet masking?**
- Each subnet is the same size.
  - **The size of each subnet may be different, depending on requirements.\***
  - Subnets may only be subnetted one additional time.
  - Bits are returned, rather than borrowed, to create additional subnets.
44. **A wireless host needs to request an IP address. What protocol would be used to process the request?**

- FTP
  - HTTP
  - **DHCP\***
  - ICMP
  - SNMP
45. What will a host on an Ethernet network do if it receives a frame with a destination MAC address that does not match its own MAC address?
- **It will discard the frame.\***
  - It will forward the frame to the next host.
  - It will remove the frame from the media.
  - It will strip off the data-link frame to check the destination IP address.
46. Which connection provides a secure CLI session with encryption to a Cisco switch?
- a console connection
  - an AUX connection
  - a Telnet connection
  - **an SSH connection\***
47. What are the three ranges of IP addresses that are reserved for internal private use? (Choose three.)
- **10.0.0.0/8\***
  - 64.100.0.0/14
  - 127.16.0.0/12
  - **172.16.0.0/12\***
  - 192.31.7.0/24
  - **192.168.0.0/16\***
48. Refer to the exhibit. Match the packets with their destination IP address to the exiting interfaces on the router. (Not all targets are used.)

```

<output omitted>
Gateway of last resort is 0.0.0.0 to network 0.0.0.0

    10.0.0.0/24 is subnetted, 1 subnets
C       10.1.0.0 is directly connected, Serial0/0/0
    172.17.0.0/24 is subnetted, 4 subnets
O       172.17.6.0 [110/2] via 192.168.3.4, 00:10:41, FastEthernet0/0
O       172.17.10.0 [110/2] via 192.168.5.2, 00:09:52, FastEthernet1/1
O       172.17.12.0 [110/2] via 192.168.4.2, 00:12:23, FastEthernet1/0
C       172.17.14.0 is directly connected, FastEthernet0/1
C       192.168.3.0/24 is directly connected, FastEthernet0/0
C       192.168.4.0/24 is directly connected, FastEthernet1/0
C       192.168.5.0/24 is directly connected, FastEthernet1/1
S*      0.0.0.0/0 is directly connected, Serial0/0/0

```

**Question:**

Refer to the exhibit. Match the packets with their destination IP address to the exiting interfaces on the router. (Not all targets are used.)

packets with destination of 172.17.10.5	FastEthernet0/0
packets with destination of 172.17.12.10	FastEthernet0/1
packets with destination of 172.17.14.8	FastEthernet1/0
packets with destination of 172.17.8.20	FastEthernet1/1
packets with destination of 172.17.6.15	Serial0/0/0
	The packet is dropped.

**Answer:**

packets with destination of 172.17.6.15
packets with destination of 172.17.14.8
packets with destination of 172.17.12.10
packets with destination of 172.17.10.5
packets with destination of 172.17.8.20
The packet is dropped.

**Download PDF File below:**



**CCNA 1 Pretest Exam Answers 2018 (v5.1 + v6.0) – Full 100%606.46 KB**  
[Download](#)

## Related Articles

[Prev Article](#)

[Next Article](#)